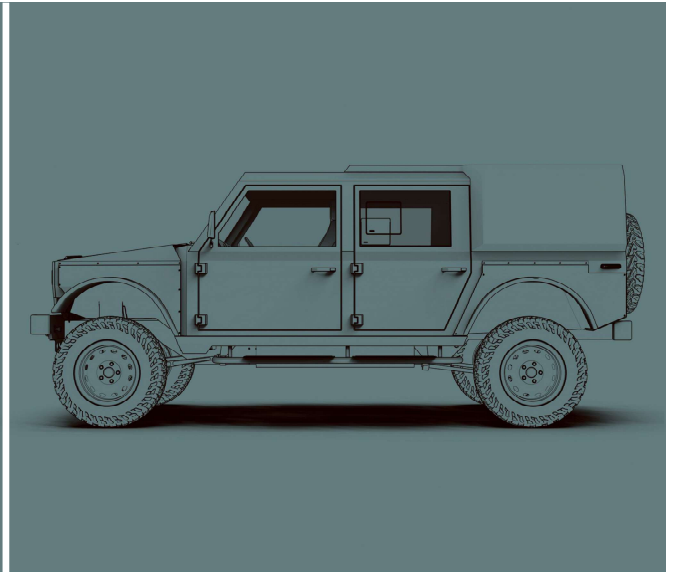
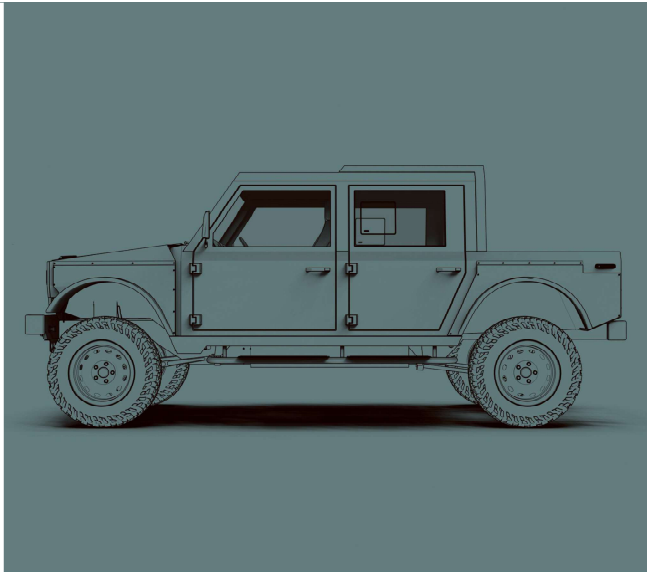
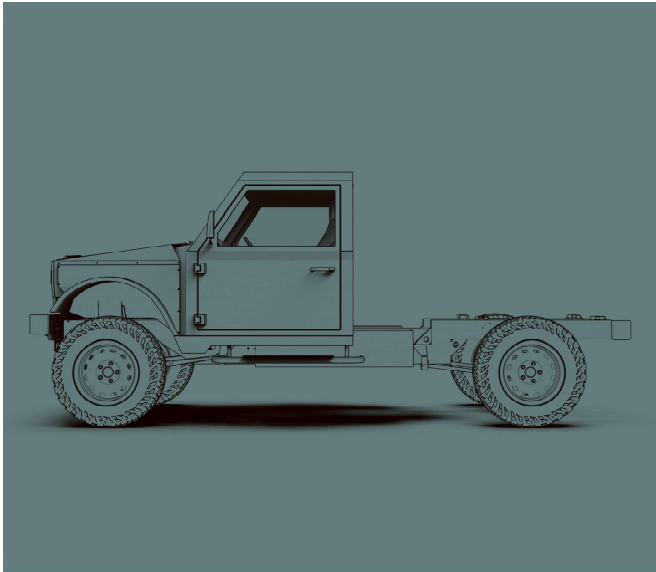


# SERIES M

M170 M280

*Munro*





## **A Breed Apart**

Founded in 2019, Munro Vehicles is an e-mobility start-up based in Glasgow with a mission to “Decarbonise the world’s dirtiest industries by electrifying mission-critical fleet vehicles”.

Built for work and hard terrain, the Series M is an unshakable vehicle with immense torque, traction and ground clearance. Whether you are in the quarry, on the farm or at the site, Series M provides the perfect work companion to help you get the job done.



# For The Most Demanding Terrain, Locations & Workplaces

From farms to frontlines, from explorers to country estates, from utilities to distilleries, from construction to conservation. The Series M is a workhorse designed for any task, in any weather and any terrain - ready for the challenge ahead.





# Off-Road Abilities

Vehicles designed to go anywhere, at anytime

**84°**

Approach Angle

**51°**

Departure Angle

**800mm**

Wading Depth

**480mm**

Ground Clearance

**4x4**

Permanent

**1,050kg**

Payload

**5mm**

Thick Steel Chassis

**1,600l**

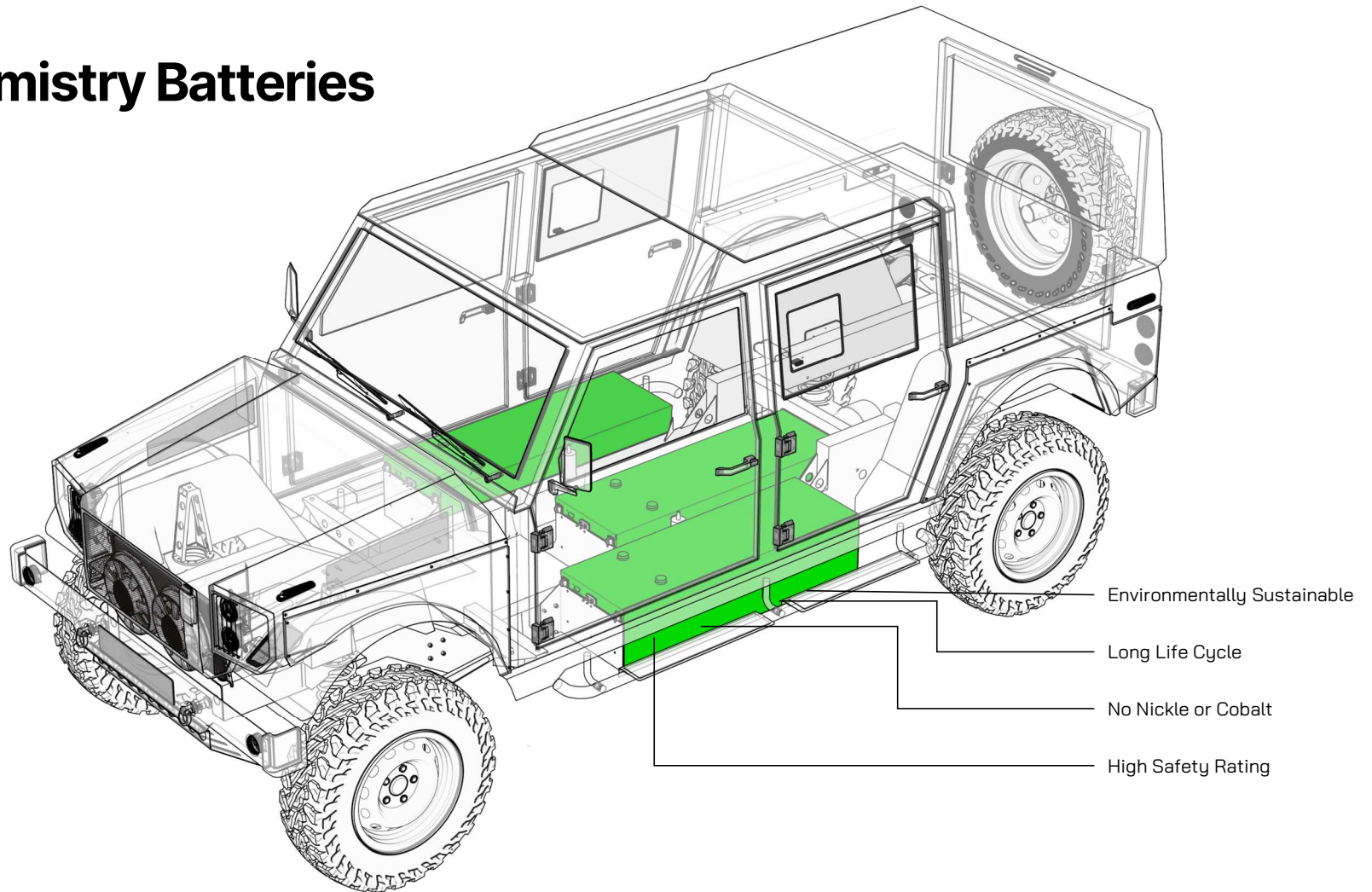
Cargo Capacity

\*Figures universally shared across all variants





# LFP Chemistry Batteries



# All Terrain Design Ethos



# Exterior Features

---



The most dependable heavy-industry 4x4 on the market today



Munro-unique chassis



Streamlined front end for improved aerodynamics and cooling



Low ratio gearing for extreme gradients



Aggressive approach/departure angles and large wheel arches for superior wheel travel & articulation



## Interior Features

---



Huge leg space front & rear, for when you work from your truck



Fully washable cabin, with drainage holes in the flooring



Super durable materials mean dust, mud & abrasion are no issue



Massive rear cargo area – big enough to load euro pallets – including tie down points & durable wood cladding



Fuss-free switchgear & interior technology, allowing you to get the job done without distraction



## 3 Body Styles

Multiple body versions allow for a wide range of use cases.



# Utility

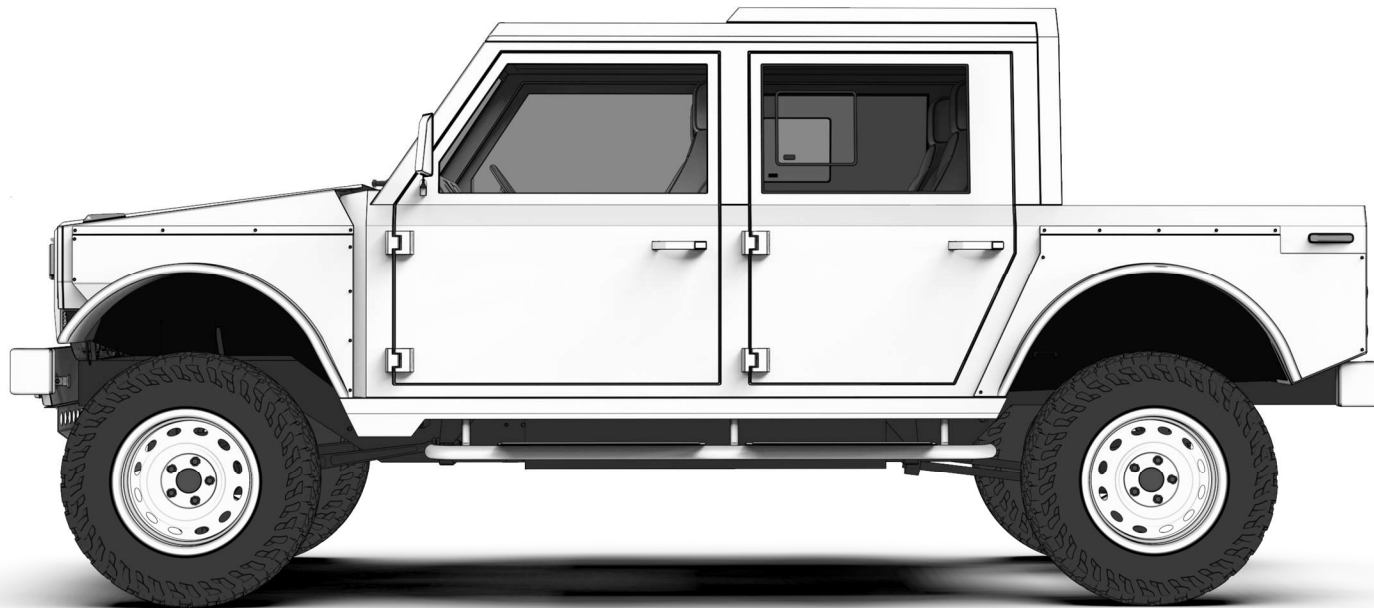
*Utility Body with a hard-top*



T

# Truck

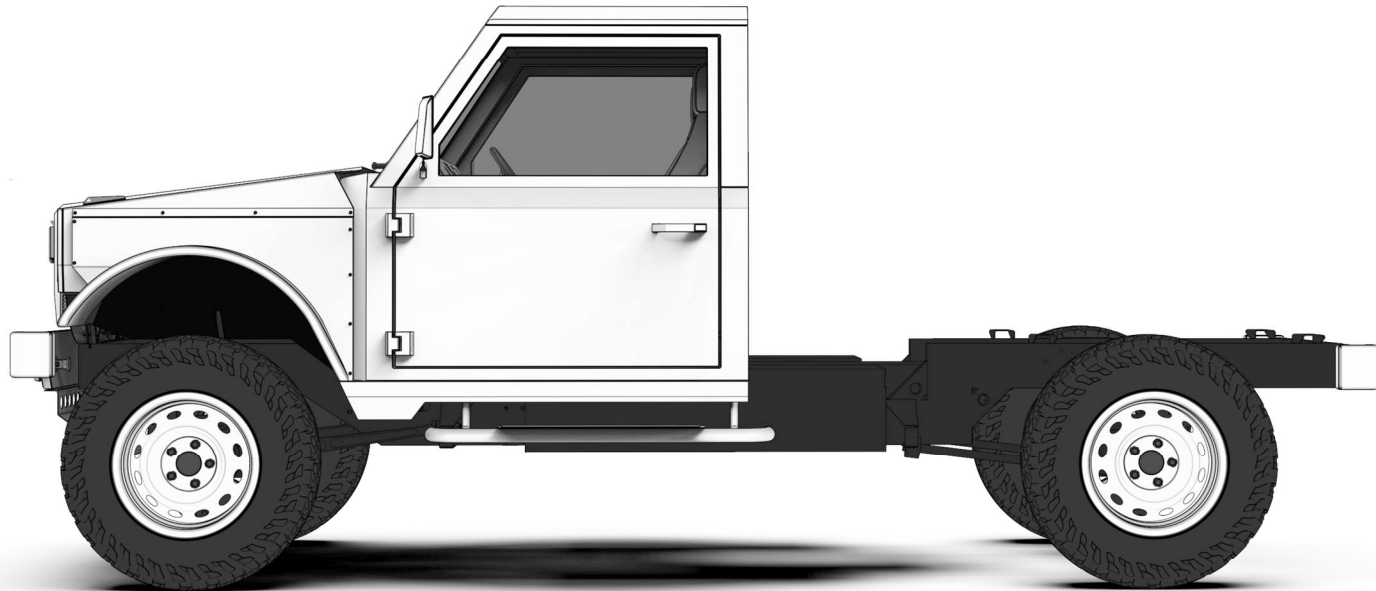
*Truck Body with an open bed*





# Chassis

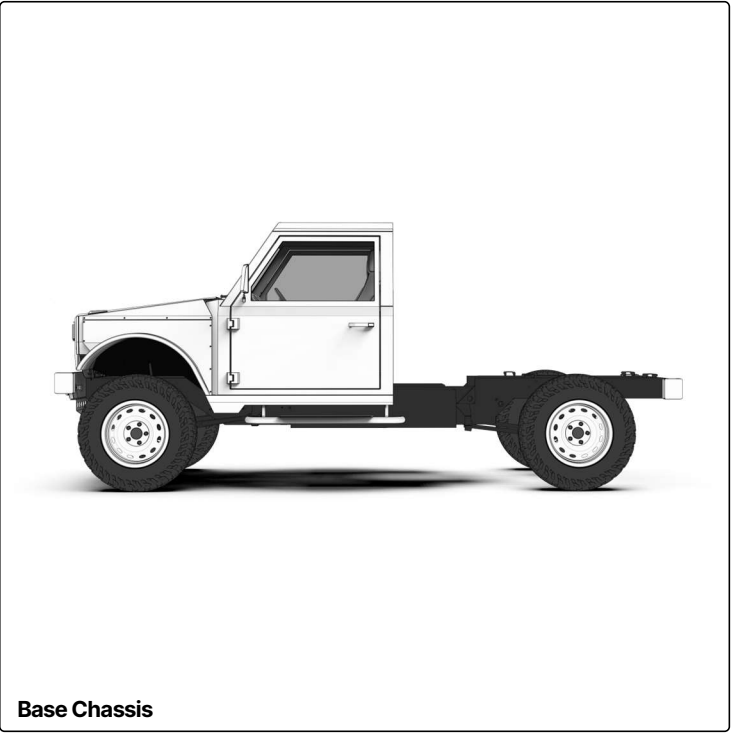
*Chassis Body with an exposed platform*





# Endless Possibilities

*By starting with the Chassis body as a base, you are able to create the perfect vehicle for your needs*



Base Chassis



Haulage



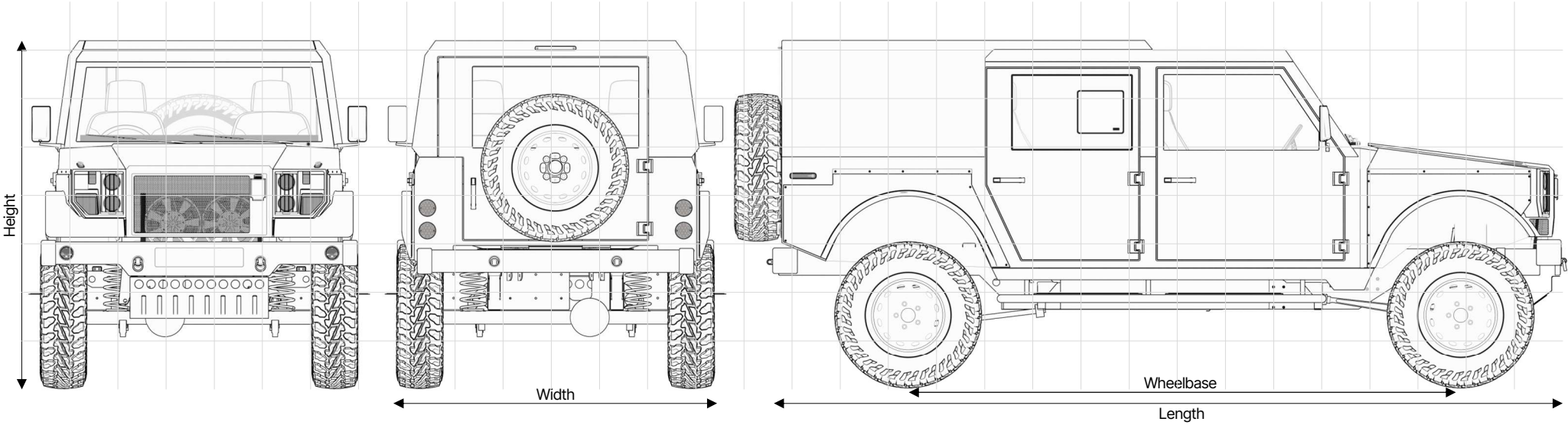
Camper



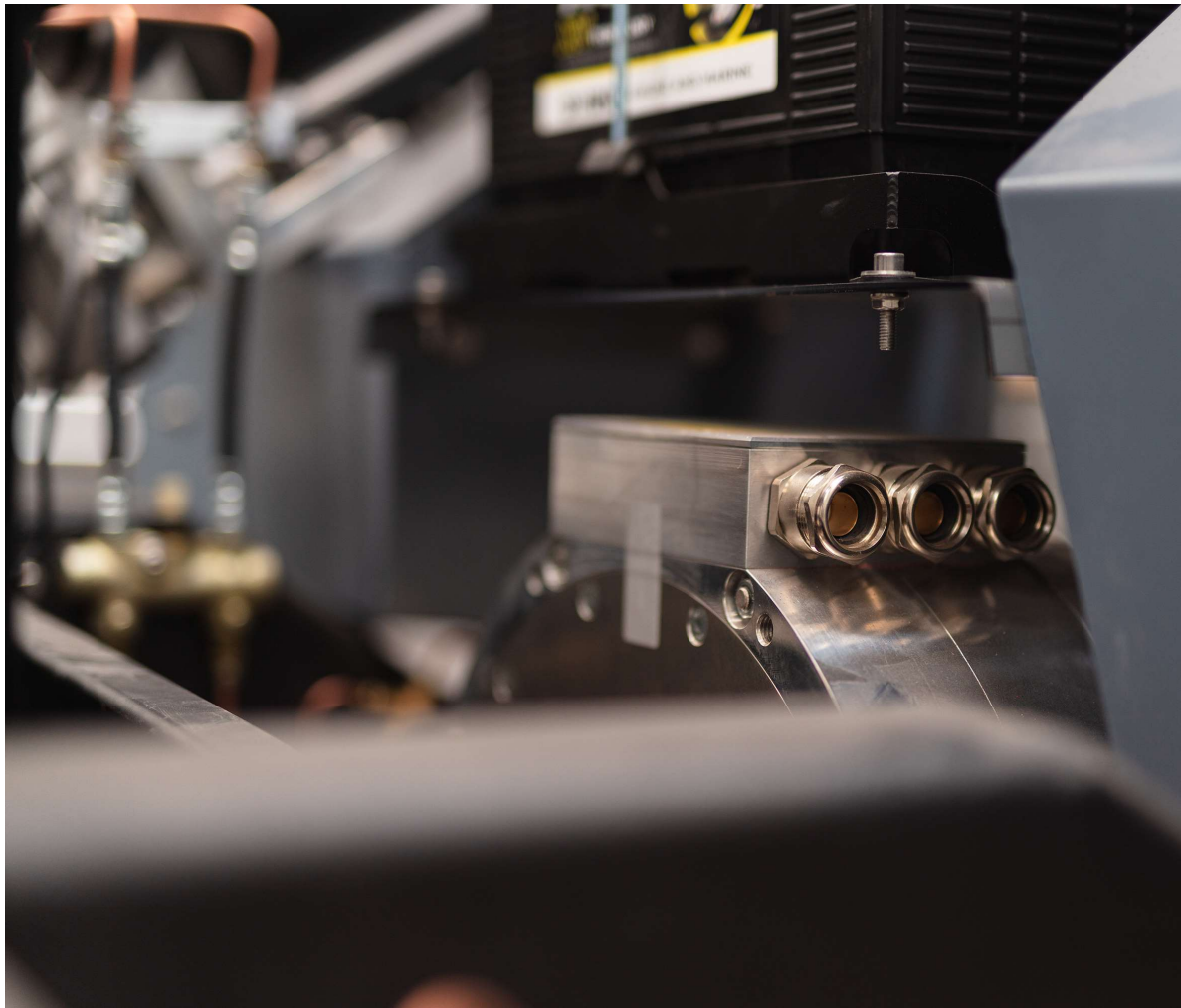
Flat Bed



# Vehicle Dimensions



Length	4590 mm	Wheelbase	3255 mm
Width	1812 mm	Height	2010 mm



## 2 Motor Options

	170kW	280kW
Power	170kW	280kW
Voltage	400V	400V
Torque	600Nm	700Nm
Horsepower	228hp	375hp
Towing (braked)	2,250kg	3,500kg
Gross Train Weight	5,000kg	7,000kg
Top Speed	80mph	95mph
0-62mph	9.2s	6.0s

# Series M Naming Matrix

Series		Power		Body		Model Name
M	+	170	+	U	=	M170U
M	+	170	+	T	=	M170T
M	+	170	+	C	=	M170C
M	+	280	+	U	=	M280U
M	+	280	+	T	=	M280T
M	+	280	+	C	=	M280C



## Full Specifications

Item	Munro M170	Munro M280	Notes
Manufacturer	Munro	Munro	
Model Name	<b>M170</b>	<b>M280</b>	
Body Styles	U, T or C	U, T or C	Hard Top (U) / Pick-up (T) / Chassis Cab (C)
Power/Motor	180kW Turntude AF140 with 1x Sevcon Gen5 Size9 inverter	270kW Turntude AF230 with 2x Sevcon Gen5 Size9 inverter	
Battery	85kWh LFP (JETBM-EV1P5SLFP-16V230A, 24 modules in series)	85kWh LFP (JETBM-EV1P5SLFP-16V230A, 24 modules in series)	
Range	200mi	200mi	
Consumption	2.25mi/kWh	2.25mi/kWh	
DC Charge Speed	130kW	130kW	
DC Charge Time	30 min	30 min	
AC Charge Speed (standard)	6.6kW	6.6kW	
Safety Features	Airbags/ABS/TC	Airbags/ABS/TC	
Top speed	95mph	95mph	
Length (mm)	4590	4590	
Height (mm)	2010	2010	
Width (mm)	1812	1812	
Wheelbase (mm)	3255	3255	
Approach Angle (deg)	84	84	
Departure Angle (deg)	51	51	
Break-over angle (deg)	148	148	
Ground clearance (mm at centre point)	480	480	
Wading Depth (mm)	800	800	
Kerb Weight (kg)	2450	2450	
Payload (kg)	1050	1050	
Gross vehicle weight (kg)	3500	3500	
Towing capacity (kg, braked)	2250	3500	
Towing capacity (kg, unbraked)	750	750	

Item	Munro M170	Munro M280	Notes
Standard Features			
5mm thick steel chassis rails	✓	✓	
Integrated roll-over protection structure around occupants	✓	✓	
All-aluminium "clamshell" front-end module	✓	✓	
All-aluminium hard-top (utility model only)	✓	✓	
Permanent mechanical four-wheel-drive	✓	✓	
Two-speed transfer case with centre locking differential	✓	✓	
Beam axles on coil sprung suspension with anti-roll bars	✓	✓	
Disk brakes all round	✓	✓	
Efficient heat pump heating with waste heat scavenging	✓	✓	
Infotainment with 9" touch screen	✓	✓	Includes Bluetooth hands-free with Android Auto / Apple Carplay
Hard-wearing textured paint on interior floor	✓	✓	
Electronic parking brake	✓	✓	
LED headlights with daytime running lights	✓	✓	
Cruise control	✓	✓	
Premium all-terrain tyres	✓	✓	
Gloss commercial paint	✓	✓	



Item	Munro M170	Munro M280	Notes
Feature Packs			
Utility Power pack	£3,260	Standard	2.5kW AC Inverter & AC Sockets, Laptop stand
Hot-climate Pack	£1,355	£1,355	Additional Air Con capacity
Cold-Climate pack	£950	£950	Additional high-voltage heater
Industrial Charger	£5,475	£5,475	22kW AC on-board charger
Work Pack	£725	Standard	Larger mud flaps, floor mats, spare wheel carrier, lightbar mount & pre-wiring
Tow kit	£695	£695	Towbar, trailer electrics, reversing camera
Assist Pack	£325	£325	Front & Rear parking sensors, reversing camera

Item	Munro M170	Munro M280	Notes
<b>Additional Options</b>			
Air suspension	£4,265	£4,265	
Locking rear differential	£625	£625	
Locking front differential	£625	£625	
Charging Cable 7.5m	£228	£228	
Billet aluminium exterior door handles and mirror mounts	£1,650	£1,650	
Billet aluminium interior door pulls and handles	£525	£525	
Rear privacy glass	£350	£350	
Infotainment system delete	NCO	NCO	(To remove radio)
Underbody protection - Aluminium	£1,200	£1,200	Includes front and rear axle guards, transmission guard
Underbody protection - Steel	£1,650	£1,650	Includes front and rear axle guards, transmission guard
Rock sliders - Steel tubular	£350	£350	
Rock lights in wheel wells	£625	£625	
Rear work flood lights	£765	£765	
Front winch bumper with bull bar and winch	£4,250	£4,250	
Front and rear light guards	£650	£650	
Roof rails	£750	£750	
Safari-style roof rack with access ladder	£2,795	£2,795	
Spray-in load liner	£650	£650	
Plywood lining in cargo area (Utility only)	£925	£925	
Corbeau Stiche Leather interior	£6,100	£6,100	Replaces middle rear seat with cubby box. Colours: Black, Tan, Burgundy, Chocolate.

Item	Munro M170	Munro M280	Notes
Recaro CS Leather/Suede interior	£11,195	£11,195	Replaces middle rear seat with cubby box. Black only, subject to availability.
Second row seat delete	NCO	NCO	
Cargo barrier behind front seats	£650	£650	
Cargo barrier behind rear seats (Utility only)	£950	£950	
Heavy-duty seat cover set	£450	£450	
Rubber mats front and rear	£220	£220	
Gloss paint - custom RAL colour	£950	£950	
Textured paint - standard colour	£600	£600	
Textured paint - custom RAL colour	£1,250	£1,250	
Contrast roof & hard-top colour	£485	£485	
Mud-terrain tyres on standard steel wheels	£950	£950	
Premium mud-terrain tyres with heavy-duty steel wheels	£1,650	£1,650	
Alloy wheels with premium all-terrain tyres	£1,525	£1,525	
Left-hand drive	TBA	TBA	
Available From	Q2 2024	Q2 2024	
<b>Price (ex VAT)</b>	<b>£63,329 (£75,995)</b>	<b>£74,995 (£89,995)</b>	

NCO – No Cost Option

Brand	Series	Power	Body
All Available Variants Matrix			
Munro	M	180	U
Munro	M	180	T
Munro	M	180	C
Munro	M	270	U
Munro	M	270	T
Munro	M	270	C



# SERIES M

M170	M280
------	------

[www.munro-ev.com](http://www.munro-ev.com)

**IMPORTANT NOTICE:** ALL TERRAIN ALL ELECTRIC LTD ('Munro Vehicles') is constantly seeking ways to improve the specification, design and production of its vehicles and alterations take place continually. Whilst every effort is made to produce up to date literature, this brochure should not be regarded as an infallible guide to current specifications, nor does it constitute an offer for the sale of any particular vehicle.

Important note on imagery & specification. All images and content within this guide may not fully reflect specifications for features, options, trim and colour schemes.

Munro Vehicles  
Unit 1b, Langlands Commercial park, Kelvin Park South  
East Kilbride, Glasgow  
G75 0RH  
Scotland

Registered in Scotland: Number SC635202

Proudly designed, engineered, tested and built in Scotland.



© 2023 ALL TERRAIN ALL ELECTRIC LTD ('Munro Vehicles'). No part of this publication may in any way be reproduced without prior written approval of Munro vehicles.